

*A Christ-centered family committed to loving God, loving others, and making disciples of all people.*



# Scribe<sup>?</sup>

A PUBLICATION OF ST. MARK'S LUTHERAN CHURCH

## **Our Vision**

Bringing  
Christ's  
compassion  
to life.

## **Our Values**

Word  
Worship  
Witness

## **Sunday Schedule**

9:30 a.m.  
Worship  
Celebration

11:00 a.m.  
Sunday School  
for All Ages

## **Monday Schedule**

7:00 p.m.  
Worship  
Celebration

# L I F E S U N D A Y

You  
knit me together  
in my mother's  
womb.  
I praise you  
because  
I am fearfully  
and wonderfully  
made.

‘Psalm 139:13-14,  
NIV

January 14<sup>th</sup>

January 2024



## Can we pray for you?

Email your request to: [4prayer@stmarkseureka.org](mailto:4prayer@stmarkseureka.org)

Call: Joy Bohlmann at 636-938-5639

For military: call Jill Tendler at 314-302-2281

## Sunday - 11:00 a.m.

### Bible Study for Adults/High School

How well do you think you know the Bible? What does it mean that man was made in the image of God? What do the stories of Isaac tell us about God? Whose prophets were asked if their god was busy using the toilet? Find out the answers to these questions and more as we explore the main narrative of the Bible, how God worked in and through people in the past, and how God works in and through people today.

Dates: Weekly

Location: Room 105

Leader: Pastor Josh Rusnak

### Women's Bible Study: Twelve Women Of The Bible

Their stories are not fairytales, their road was not easy, and their examples are not perfect. They lived in times and places quite different than ours. Yet they hold up a mirror to our souls that can help us better understand our own story. And in doing so, we find freedom to come to God as we are, with total transparency—honest and real. In this journey, you will meet a group of women in the Bible whose lives teach us about ourselves and about who God is. You will open yourself to the raw and revealing stories of frailties, struggles, brokenness, and victories of real women from both the Old and New Testaments.

Dates: January 7, 21, February 4

Location: Room 104

Leaders: Denise Kasten

### Women's Bible Study: Messy People

Every life gets messy at times. Sometimes, these messes are literal, like a house that would be easier to condemn than to clean. But sometimes, they are intangible messes such as illness, conflict, depression, abuse, bankruptcy, divorce, and job loss. And these messes can be painful, hurting our hearts and our homes. But as we see in the Bible, God loves to use messy people! In this study, we will dig into the lives of biblical heroes who were messy people just like us but who were used by God in powerful ways. Together, we will examine the stories of five wonderful but messy people and one messy parable character: Rahab, the Prodigal Son, Josiah, Mary, David, and Daniel. From their stories, we will learn how God can use broken people, restore damaged hearts and relationships, give us the power to handle our critics, and help us deal with the hard moments of life. Along the way, we'll discover that we don't have to just endure messy lives but can actually learn to thrive with God's guidance and help. In the hands of God, our messes can become His masterpieces!

Dates: February 11 - March 17

Location: Room 104

Leader: Kim Becker

No Classes:

January 14 - Baptism Celebration

January 28 - School Open House

## Join Us For A Weekday Bible Study!

### Women's Study

1<sup>st</sup> Wednesday

Time: 10:00 a.m.

Location: Conference Room

Leader: Sandra Canida

### Women's Study

3<sup>rd</sup> Tuesday

Time: 10:00 a.m.

Location: Conference Room

Leader: Betty Schrader

### Men's Study

1<sup>st</sup> and 3<sup>rd</sup> Saturday

Time: 7:00 a.m. - 8:30 a.m.

Location: School Room 106

Leader: Mike Kennedy

### Adults

Tuesday Evening

Time: 7:00 p.m.

Location: School Room 106

Leader: Pastor Bill Liebmann



## My First Catechism Presentation

On Sunday, February 18 all families with children ages 3 years to kindergarten are invited to join us for this special presentation during our 9:30 a.m. worship service. My First Catechism is a first-step resource to help parents teach the faith to their children. Organized in the same way as the Small Catechism, it explains the main point of each of the Six Chief parts, defines terms, points to familiar examples in everyday life, and promotes family faith development.



### Life Team News

St. Mark's will celebrate the Sanctity of Life on Sunday, January 14. The word "sanctity" means holding high, or placing a high value on something. Join us in this celebration, as we value life because God does.

## Potluck

We will have a fellowship meal following the service on Sunday, February 18, at 11:00 a.m. in the gym. This will be a potluck-style meal, so plan to bring something tasty to enjoy. Did you know St. Mark's has 847 individual members representing 370 households? We encourage you to take this opportunity to get to know your family better! To help you mix it up when you arrive, individuals will be assigned to specific tables. We hope that everyone will join us for this special event. To help us prepare additional food, drinks, and seating, please RSVP at [www.stmarkseureka.org/potluck/](http://www.stmarkseureka.org/potluck/). The kitchen will be open before the worship service to drop off items that need to be refrigerated.



## Theodore "Theo" Allen Ashley

Born June 22, 2023 at 6:56 p.m.  
at 6 lbs. 11 oz. and 19 in. long.  
Baptized October 14, 2023.

The Ashley family would like to invite you to a potluck on  
**Life Sunday, January 14**  
**at 11:00 a.m.**  
**in the gym.**

Ty and Hannah would like to take this opportunity to thank everyone for their love, support, and prayers in their time of need. Come meet Theo and celebrate his baptism!

*"For with GOD nothing shall be impossible." Luke 1:37*

## Capital Campaign

I am delighted to report that as of Sunday, December 17, we have received over \$263,165 in gifts towards our debt reduction campaign. This giving and matching funds from the General Fund allowed St. Mark's to pay off our building debt fully. What a blessing this is for our ministry at St. Mark's to be debt-free! I thank God for everyone who prayed for our ministry and participated in this accomplishment.

In service with you,  
Steve Kasten  
President, Board of Directors

## New Member Class

Interested in hearing more about St. Mark's? What does it even mean to be Lutheran? Want to get connected to a church but haven't found the right one? Have you been attending St. Mark's for a long time, but haven't had time to come to a class? Please join us for at our new member classes Sunday morning at 11:00 a.m. from January 7 - March 17 in the Prayer Chapel. This series is for anyone who is interested in learning more about the Christian faith from a Lutheran perspective and it can serve as a membership course for those who desire it. RSVP at [www.stmarkseureka.org/church/](http://www.stmarkseureka.org/church/)



**The topics grieving people receive help for with the issues they're facing**

Difficult Emotions | Loneliness | Relationships | Guilt and Regrets | Questions for God | Moving Forward | And Much More

**Wednesday Evenings**  
**January 17 - April 10, 2024**  
**6:30 p.m. - 8:00 pm.**  
**Room 106**



### **Leader**

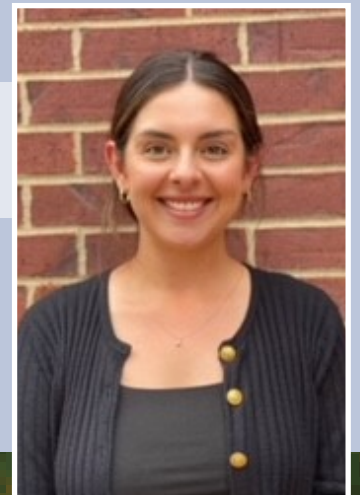
Jeannine Liebmann, MA,  
LPC, CEAP  
EAP Counselor & Consultant  
H&H Health Associates, Inc.

Register at

[www.stmarkseureka.org/griefshare/](http://www.stmarkseureka.org/griefshare/)

### **Co-Leader**

Emily McGraw  
Counseling Intern from  
Covenant Seminary



*Let us grieve together.*



## School News


Interim Principal Diana Meers will share some important and exciting news about our school ministry on Monday, January 8, and Thursday, January 18, at 6:30 p.m. in the Worship Center. The congregation is invited to attend. You may choose either date, and childcare will be available. We look forward to seeing you in January.

## Early Childhood Education

Come join the team at St. Mark's Lutheran School and cherish a Christ centered environment for children. Help create a safe place for children to learn and grow during these important developmental years. Benefits include: weekends and major holidays off, tuition discounts for your children, flexible shifts. Download an application at [www.stmarkseureka.org](http://www.stmarkseureka.org).

Acts 2:42

# KOINONIA



They devoted themselves to the apostles' teaching and to fellowship, to the breaking of bread and to prayer.

**New Ministry Coming Soon!**  
Watch your email for more information from Pastor Josh Rusnak.

## Open House

St. Mark's Lutheran School is preparing registration for the 2024-2025 school year. The school serves ages 6 weeks old through 8<sup>th</sup> grade. Do you know someone who would benefit from a program that boasts, "academic excellence in a Christ-centered environment?" Invite them to attend our Open House on Sunday, January 28 from 11:00 a.m. – 1:00 p.m. to learn more! No appointments are needed.

## Big Band Swing

The Lutheran South bands will host *Big Band Swing* on Friday, January 12 from 6:00 p.m. - 10:00 p.m. The night will feature the local professional big band "The Ambassadors of Swing." Tickets are available for \$30 each and include beer, wine, and hors d'oeuvres. Free swing dance lessons will be offered at 6:30 p.m. It is sure to be a fun evening as we raise money for the band to go on tour this spring! Get tickets at [LSlancers.org/events](http://LSlancers.org/events)



*Christ caring for people through people*

# STEPHEN MINISTRY

Stephen Ministry is designed for long-term relationships, a great blessing for many people. But some people need a more immediate and brief connection with someone, others don't feel comfortable talking so in-depth, and some don't have time for a long-term commitment. This is why we want to expand this ministry to provide opportunities to reach out both long- and short-term to members who need support and encouragement.

Our Stephen Ministers will continue to be available to listen to, pray with, and support individuals confidentially during difficult times. But it doesn't have to be on a long-term regular basis. It could be a few conversations and prayers. It could be listening to and encouraging you through a specific situation. It could be occasionally checking in to ensure you're doing okay. Or it could be an ongoing, long-term relationship.

Some of the reasons you might want to talk to a Stephen Minister are:

- Loss of a job
- Serious illness or injury of yourself or a loved one
- Grief
- Troubled child
- A loved one's addiction
- Empty nest
- Big decision
- New baby
- Recent move

It doesn't have to be a huge issue – it can just be a situation where you need a friend in Christ who will listen to you, pray with you, and keep your situation confidential. We want all St. Mark's members to know you are not alone, you are loved, and you are welcome here – and that because God loves you, we love you!

If you need to connect with a Stephen Minister contact Pastor Bob, Pastor Josh or a Stephen Ministry Leader: Denise Kasten, Brian Falls, Jeannine Liebmann.



## COLLECTION FOR



**POSTPARTUM ITEMS**  
HEAVY PADS, TUCKS

**BABY CARE**  
WASH - SHAMPOO - LOTION  
WIPES - NAIL CLIPPERS

**CLOTHES**  
12, 18, 24 MONTH

**DIAPERS**  
SIZE 4 AND 6

RECEIVING BLANKETS  
WINTER CAR SEAT COVERS  
SMALL BOTTLES OF BABY  
LAUNDRY DETERGENT

Drop off items in the office marked Birthright.

Questions?

Contact Christiana Petry at [critterd15@gmail.com](mailto:critterd15@gmail.com)

## Calendar

Stay up-to-date by viewing the church calendar at [www.stmarkseureka.org/members/](http://www.stmarkseureka.org/members/)

## Evening Worship

Out of town or working on Sundays? You can still worship with us on Monday evenings at 7:00 p.m.

## Dine to Donate

Join us at Camila's Mexican Restaurant in Eureka to raise funds for Guatemala! Mark your calendars for the first Monday of each month. You can come for lunch, dinner or carry-out. 10% of all sales will go towards providing food for the people in LaFragua as well as mission trips.

## Offering Envelopes

Due to the increased online giving, we no longer need to order as many boxed offering envelopes. While this is not a huge saving, it will be a reduced expense to the church budget. To do this, envelopes must be renumbered, which will take effect on January 1, 2024. When you pick up your new box of offering envelopes, please take note of your new number.

## Chair Exercise

Would you like to keep in shape and exercise, but you're unable to "jump around" due to arthritis, or you can't get "up off the floor" once you're down? Well, here's the solution - Chair Exercise! These classes are offered at St. Mark's on Wednesdays from 11:00-11:30 a.m. in the church lobby. The class is ongoing, so give it a try. For more information, contact Diane at 636-938-4932. No classes on March 13, 27, and April 3.

## Food Pantry

To those of you who generously give to the Food Bank, we thank you from the bottom of our hearts. You can drop off boxed or canned goods anytime in the lobby.

## The Novel Seeker's Book Club

The Novel Seeker's Book Club welcomes anyone who enjoys reading all types of genres and having thought-provoking discussions. We meet every six weeks at the Eureka Hills Library from 9:00 a.m.-11:00 a.m. For more information, you can contact Alene Lewis at [dogwalker12@att.net](mailto:dogwalker12@att.net).

## 2024 St. Mark's Leadership Contacts

### Staff

- Pastor Bob Liebmann  
[bliebmann@stmarkseureka.org](mailto:bliebmann@stmarkseureka.org) | 314-229-4678
- Pastor Josh Rusnak  
[jrusnak@stmarkseureka.org](mailto:jrusnak@stmarkseureka.org) | 636-938-4432
- Lauren Bates (Director of Christian Education)  
[lbates@stmarkseureka.org](mailto:lbates@stmarkseureka.org) | 636-751-3422
- Tonya Cuneo (Early Childhood Director)  
[tcuneo@stmarkseureka.org](mailto:tcuneo@stmarkseureka.org) | 636-938-4432
- Shawn Stuart (Office Administrator)  
[sstuart@stmarkseureka.org](mailto:ssstuart@stmarkseureka.org) | 636-938-4432 ext.221
- Donna Riendeau (Accountant)  
[driendeau@stmarkseureka.org](mailto:driendeau@stmarkseureka.org) | 636-938-4432 ext.222
- Leslie Martineau (Communications/Media)  
[lmartineau@stmarkseureka.org](mailto:lmartineau@stmarkseureka.org)
- Laura Falls (Music Ministry Director)  
[lfalls@stmarkseureka.org](mailto:lfalls@stmarkseureka.org)

### Board of Elders

- Brian Falls - [brianfalls86@gmail.com](mailto:brianfalls86@gmail.com)
- Steve Mangrum - [steven.r.mangrum@gmail.com](mailto:steven.r.mangrum@gmail.com)
- Kevin Schaeg - [kevin.schaeg@gmail.com](mailto:kevin.schaeg@gmail.com)
- Lars Valin - [lvalin7998@aol.com](mailto:lvalin7998@aol.com)

### Board of Directors

- (Chairman)
- Jake Petry (Vice Chairman) - [critterd15@gmail.com](mailto:critterd15@gmail.com)
- Sheri Haas (Secretary) - [shaas@stmarkseureka.org](mailto:shaas@stmarkseureka.org)
- Penny Richardson (Treasurer) - [pennyglues@gmail.com](mailto:pennyglues@gmail.com)
- Wally Bowman - [wallygloria@sbcglobal.net](mailto:wallygloria@sbcglobal.net)
- John Lewis - [jtl1967@charter.net](mailto:jtl1967@charter.net)
- Phil Richardson - [biomedrich@gmail.com](mailto:biomedrich@gmail.com)
- Joan Salters - [saltersja@yahoo.com](mailto:saltersja@yahoo.com)
- John Schrader - [john.schrader@suez.com](mailto:john.schrader@suez.com)

## Financial Summary as of November 2023

	FY 2024	Budget 2024
Operating Income - Church	\$290,198.10	\$272,352.06
Operating Income - School	\$654,674.20	\$571,054.59
Total Operating Income	\$944,872.30	\$843,406.65

Operating Expenses - Church	\$377,912.15	\$363,307.75
Operating Expenses - School	\$482,185.35	\$477,408.87
Total Operating Expenses	\$860,097.50	\$838,349.72

Net Operating Income (Loss)	\$84,774.80	\$5,056.93
-----------------------------	-------------	------------



500 Meramec Blvd.  
Eureka, Missouri 63025  
636.938.4432  
[www.stmarkseureka.org](http://www.stmarkseureka.org)

## Church Ministry Staff

**Pastor**  
Bob Liebmann

**Pastor**  
Josh Rusnak

**Director of Christian Education**  
Lauren Bates

**Office Administrator**  
Shawn Stuart

**Accountant**  
Donna Riendeau

**Communications/Media**  
Leslie Martineau

**Music Director**  
Laura Falls

## School Ministry Staff

**Interim Principal**  
Diana Meers

**Early Childhood Director**  
Tonya Cuneo

**Early Childhood Assistant Director**  
Jennifer Brevard

### School Ministry Teachers:

#### *Day School Teachers:*

Mallory Hull  
Martina Kunzler  
Janet Landgraf  
Jackie Langley  
Lisa Lockwood  
Angela Montgrain  
Susan Mueller

#### *Early Childhood Teachers:*

Jennifer Brevard  
Kiley Eversole  
Glenda Gastler  
Anne Knollmann  
Ellen Strausbaugh  
Rhonda Sutton

## School Days Program

AmeriGas partners with local schools to help support them, and the community. The School Days Program will give your school up to \$2,000 per year to purchase items for any school-related need. AmeriGas will tally up the total gallons tied to the specified school and pay \$0.02 per gallon at the end of the School Days program. Schools will receive a check the following September, just in time for the school year. Go to [amerigas.com](http://amerigas.com) and click on the "In the Community" link at the bottom of the page to discover more about the program and how to enroll.

## Box Tops for Education

You can use the Box Tops app to scan your receipt. The app will find participating products purchased at any store and instantly add cash to your school's earnings online. Please note that some Box Tops products are not labeled; check our product list for a complete list of participating products or for help with the app at [BTfE.com](http://BTfE.com).

## Martha's Heart

Martha's Heart provides: hospital visits, pre-post surgery phone calls, funeral luncheons, and homebound visits. Thank you to all of the dedicated volunteers who serve God and others in this ministry. If you have a need or would like to get involved please contact the church office at 636-938-4432.

## Member Marketplace

Are you looking for someone who you can trust? Would you like to support the businesses of your fellow Christians? Do you need an electrician? plumber? roofer? babysitter? Do you have a service that you would like to offer? There is a bulletin board in the hallway where you can advertise your services or put up a note if you need a service. If you have furniture or appliances that you don't need any more, someone else may want them. Put up a note! Tacks are provided.

## Soda Tabs/Eyeglasses

We continue to collect soda tabs and eyeglasses. If you would like to donate, you may take items to the office and put them on the table. The eyeglasses go to the Lions Club who recycles them for the Recycle for Sight program to provide to provide glasses for low to middle-income families. The Tab Top Program invites people of all ages to collect aluminum tabs from beverage cans to support The House that Love Built! Thanks to our friends at Didion Orf Recycling, the tabs are recycled and turned into a monetary donation for Ronald McDonald House Charities of St. Louis.

## Simply Giving

Simply Giving is a convenient, safe and simple way to give offering and donations through electronic funds transfers (EFT) directly from your checking with no fee. Sign up today! Forms are available at the Connection Center. Just fill out and drop it off in the office.

## Greeting Cards

Our care ministry is in need of new or unused greeting cards and envelopes. (holiday, sick, birthday, etc.) Please drop off in the office.

## Cross Wall Plaque

A replica of the cross that hangs above the altar is available for purchase for \$25 each. You can purchase the crosses through the office during normal operating hours. They make great gifts!

## Scribe

Printed copies of the Scribe are available at the Connections Center.

## Submissions

Sent to: Leslie Martineau at [lmartineau@stmarkseureka.org](mailto:lmartineau@stmarkseureka.org). The deadline for the Sunday Announcements is 3:00 p.m. on Tuesday. The Scribe deadline is the 8<sup>th</sup> of every month.